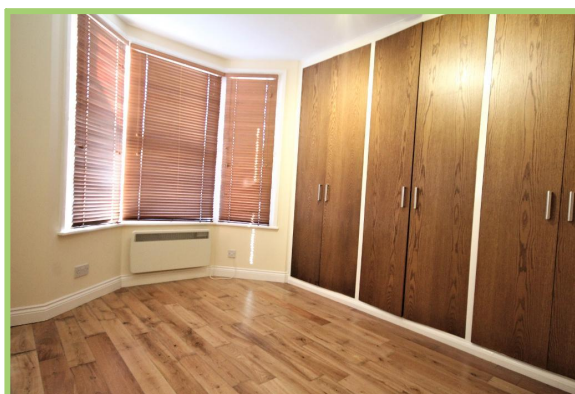


**Hermitage Road, Manor House  
 1 Bedroom Flat**

**Price: £280 pw**



- ✓ Hermitage Road, Manor House, N4
- ✓ Open Plan Kitchen / Reception
- ✓ Built In Wardrobes

- ✓ One Double Bedroom Flat
- ✓ Private Garden With Shed
- ✓ Wood Floors

## Hermitage Road, Manor House

Bryan Estates are pleased to offer this stunning refurbished one bedroom garden flat on Hermitage Road, Manor House, N4.

Finished to a high standard this property boasts an open plan kitchen/reception, modern shower room, good sized bedroom with built in wardrobes and a large private garden with shed.

Only a short walk to Manor House Tube Station and amenities.



Particulars are thought to be materially correct though their accuracy is not guaranteed and they do not form part of any contract. Services, fittings and equipment referred to within the sales particulars have not been tested and no warranties can be given and prospective buyers must make their own enquiries regarding such matters.

Measurements are approximate and are for a guide only (room measurements are taken and to be to the nearest 3"), we would therefore advise prospective purchasers to check any measurements that are of particular importance to them. Some statements are inevitably 'subjective' and are therefore the view of the author at the time the information was prepared. If any items are important to you, please check with the office first, especially if you are travelling some distance to view.