

**Canonbury Mews, Petherton Road, Highbury  
 2 Bedroom Flat**

**Price: £576 pw**



- ✓ Private Gated Mews Development
- ✓ Plenty Of Built In Storage
- ✓ Secured Off Street Parking

- ✓ Two Double Bedrooms
- ✓ High Ceilings & Solid Wood Floors
- ✓ Open plan Kitchen/Reception Room

## Canonbury Mews, Petherton Road, Highbury

Bryan Estates are pleased to offer this attractive two double bedroom modern apartment situated within this secure gated mews development converted from a former dairy.

Set behind secure gates from Petherton Road, the property boasts a large open plan kitchen/reception room, two double bedrooms both with Juliet balconies, a stylish bathroom, and a copious amount of storage space throughout.

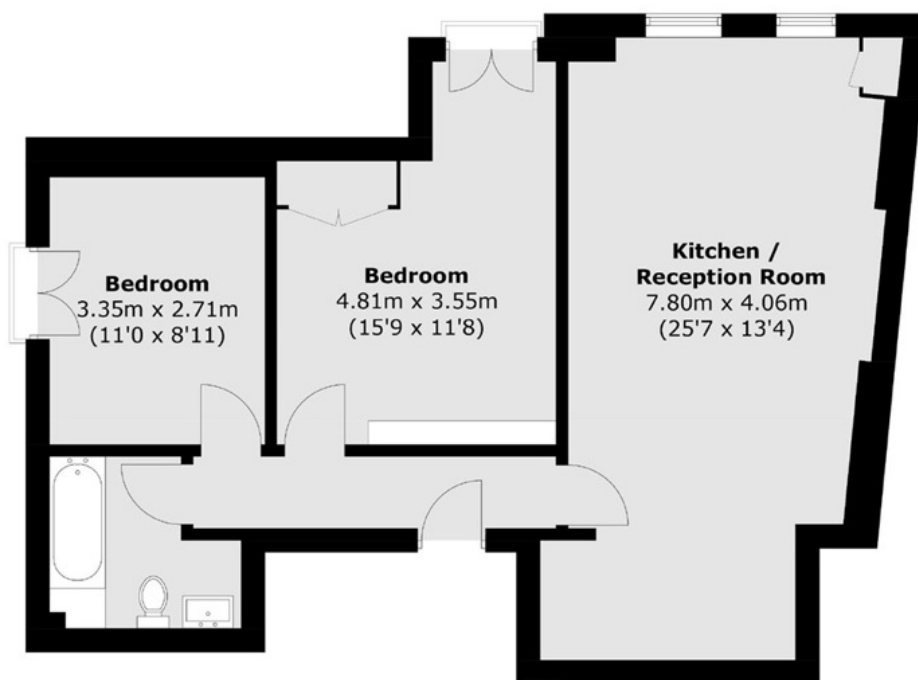
Finished to a high standard with high ceilings and solid wood floors throughout.

Conveniently located close to both Canonbury overground station and Highbury & Islington tube station.



Particulars are thought to be materially correct though their accuracy is not guaranteed and they do not form part of any contract. Services, fittings and equipment referred to within the sales particulars have not been tested and no warranties can be given and prospective buyers must make their own enquiries regarding such matters.

Measurements are approximate and are for a guide only (room measurements are taken and to be to the nearest 3"), we would therefore advise prospective purchasers to check any measurements that are of particular importance to them. Some statements are inevitably 'subjective' and are therefore the view of the author at the time the information was prepared. If any items are important to you, please check with the office first, especially if you are travelling some distance to view.



Total area (approx.): 64.1 sq. m (690.0 sq. ft)