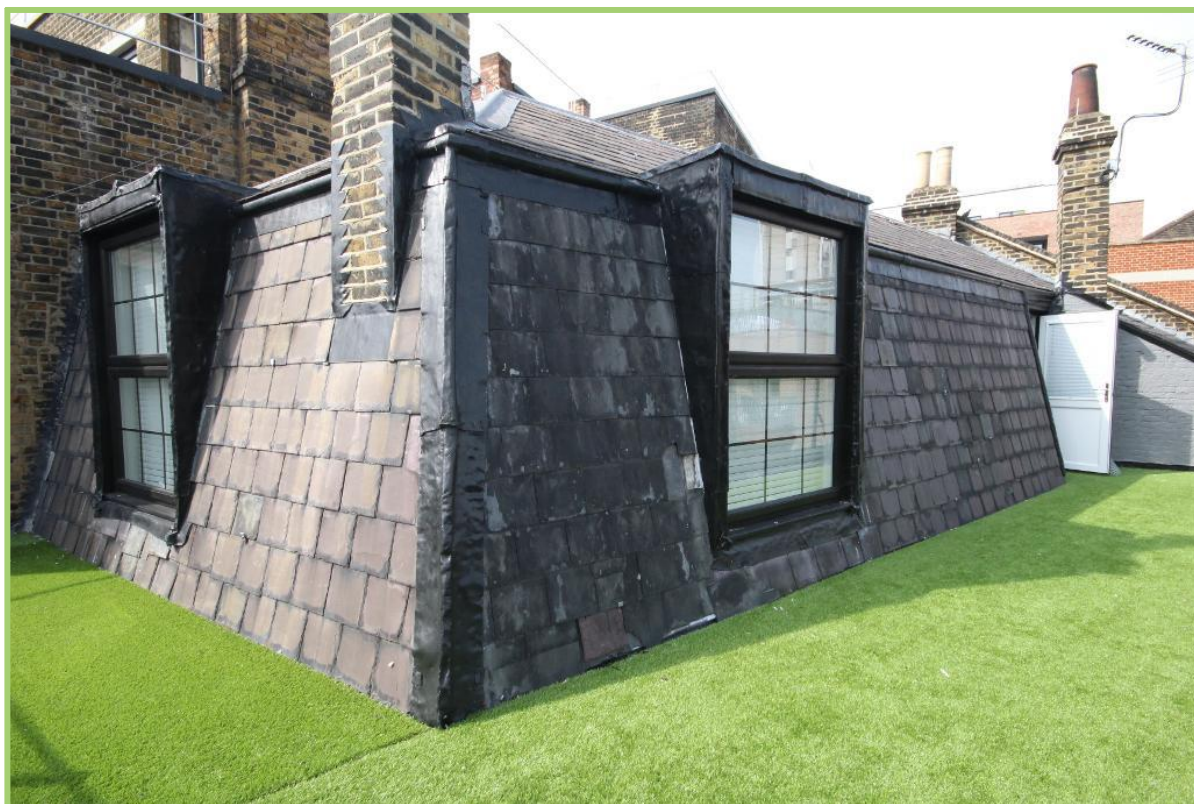


**Diss Street, Shoreditch
1 Bedroom Flat**

Price: £510 pw



- ✓ Newly Refurbished
- ✓ Large Roof Terrace

- ✓ One Bedroom Flat
- ✓ Open Plan Kitchen/Reception Room

Diss Street, Shoreditch

A stunning refurbished one bedroom flat with a stunning wrap around private roof terrace located on Diss Street, Shoreditch, E2.

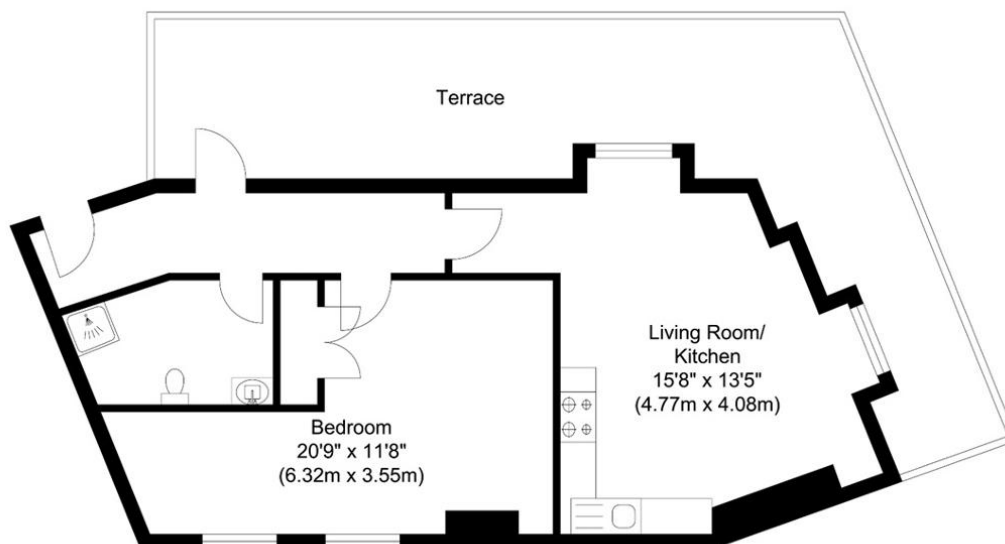
Located on the 2nd floor this property features an open plan Livingroom/kitchen, spacious double bedroom with built-in wardrobe and a modern tiled bathroom with shower cubical.

Minutes to the heart of Shoreditch. An early viewing is a must to avoid disappointment.



Particulars are thought to be materially correct though their accuracy is not guaranteed and they do not form part of any contract. Services, fittings and equipment referred to within the sales particulars have not been tested and no warranties can be given and prospective buyers must make their own enquiries regarding such matters.

Measurements are approximate and are for a guide only (room measurements are taken and to be to the nearest 3"), we would therefore advise prospective purchasers to check any measurements that are of particular importance to them. Some statements are inevitably 'subjective' and are therefore the view of the author at the time the information was prepared. If any items are important to you, please check with the office first, especially if you are travelling some distance to view.



Total Floor Area
Approximate Floor Area
534.64 sq. ft.
(49.67 sq. m)

Energy Performance Rating

Energy Efficiency Rating

| Score | Energy rating | Current | Potential |
|-------|---------------|---------|-----------|
| 92+ | A | | |
| 81-91 | B | | 83 B |
| 69-80 | C | 73 C | |
| 55-68 | D | | |
| 39-54 | E | | |
| 21-38 | F | | |
| 1-20 | G | | |