

Mildmay Grove South, Islington
2 Bedroom Maisonette

Price: £750 pw



- ✓ Two Bedroom Maisonette
- ✓ Brand New Fitted Kitchen
- ✓ Modern Bathroom
- ✓ Study Room
- ✓ Large Reception Room

- ✓ Recently Refurbished
- ✓ Brand New Carpets
- ✓ Separate W.C
- ✓ Built In Wardrobes
- ✓ Own Private Entrance

Mildmay Grove South, Islington

Bryan Estates are delighted to present this newly refurbished two bedroom maisonette located on Mildmay Grove South, Islington, N1.

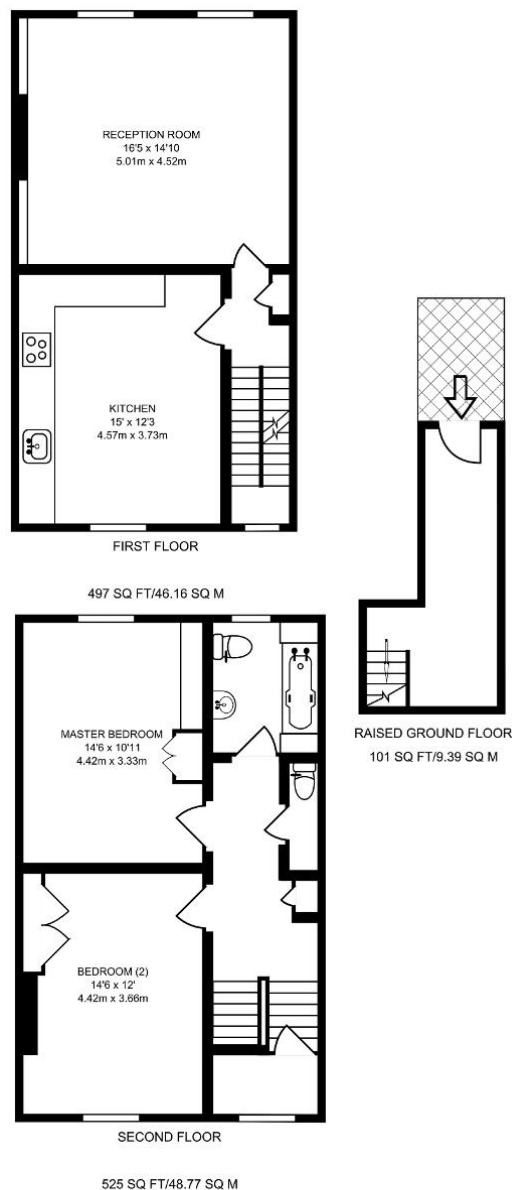
Arranged over two levels covering 1,123 Sq Ft (104 Sq M), the property boasts a brand new modern fitted dining kitchen with integrated appliances including dishwasher and microwave, large separate reception room, two double bedrooms with built in wardrobes, modern tiled bathroom, separate W.C and a small study/office.

Located minutes to Dalston Junction & Cannonbury Overground stations.



Particulars are thought to be materially correct though their accuracy is not guaranteed and they do not form part of any contract. Services, fittings and equipment referred to within the sales particulars have not been tested and no warranties can be given and prospective buyers must make their own enquiries regarding such matters.

Measurements are approximate and are for a guide only (room measurements are taken and to be to the nearest 3"), we would therefore advise prospective purchasers to check any measurements that are of particular importance to them. Some statements are inevitably 'subjective' and are therefore the view of the author at the time the information was prepared. If any items are important to you, please check with the office first, especially if you are travelling some distance to view.



Energy Performance Rating

Energy Efficiency Rating

Score	Energy rating	Current	Potential
92+	A		
81-91	B		
69-80	C		77 C
55-68	D	65 D	
39-54	E		
21-38	F		
1-20	G		